

Is that any way to treat a Pinot?



Mornington
Peninsula
17 June 2015

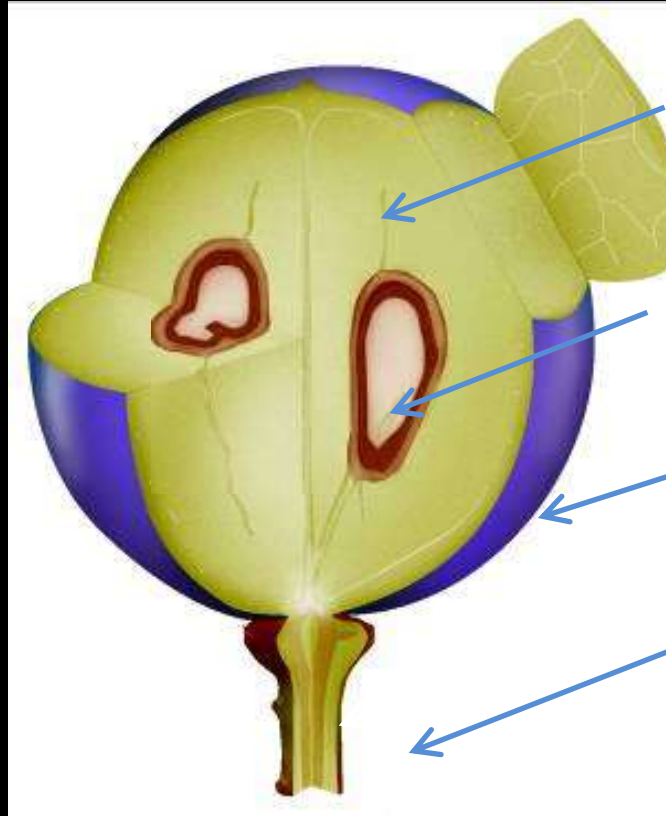




Cabernet Sauvignon



Pinot Noir



Pulp

Seed

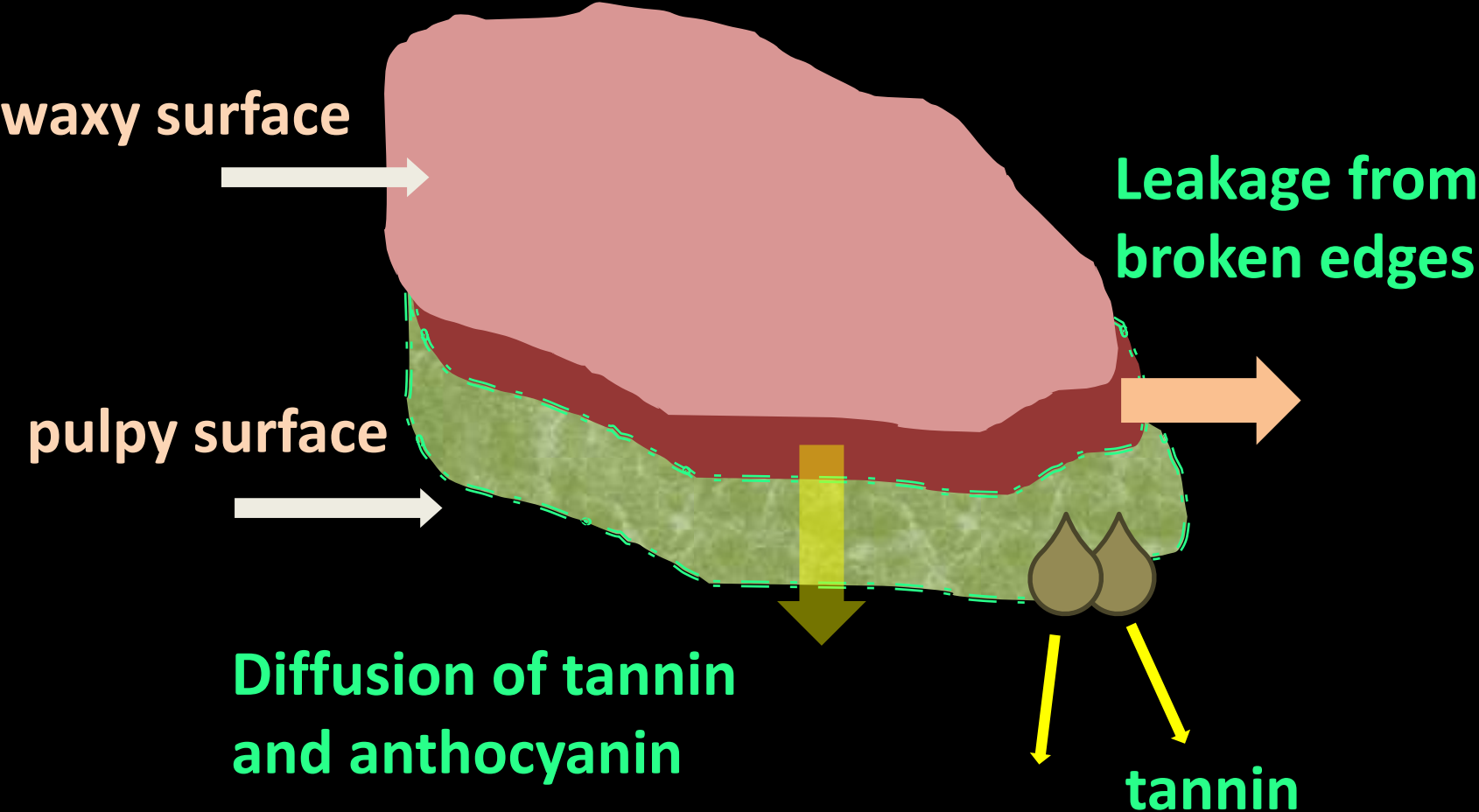
Skin

Stalk

ACE maceration

ACE = Accentuated Cut Edges

Grape skin fragment



Area = $2\text{cm} \times 2\text{cm} = 4\text{cm}^2$

Edge length of square:

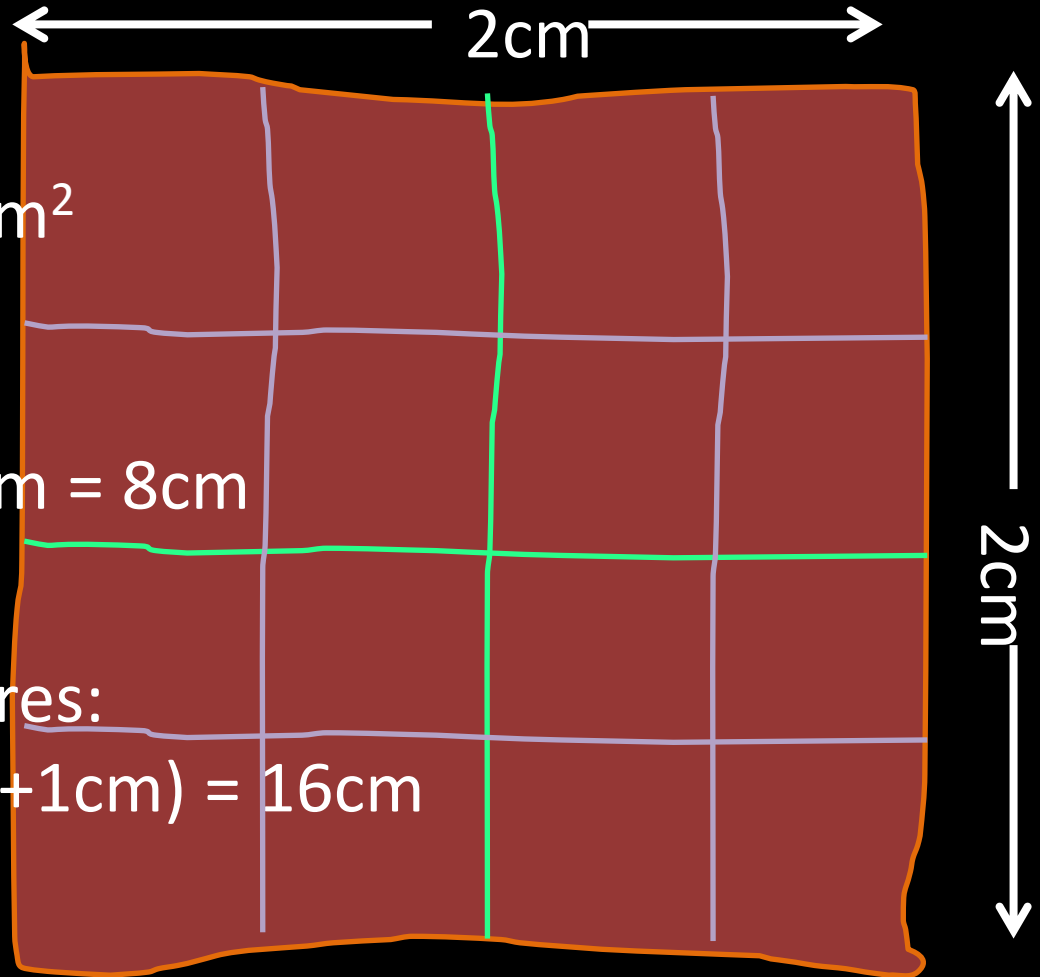
$= 2\text{cm} + 2\text{cm} + 2\text{cm} + 2\text{cm} = 8\text{cm}$

Edge length small squares:

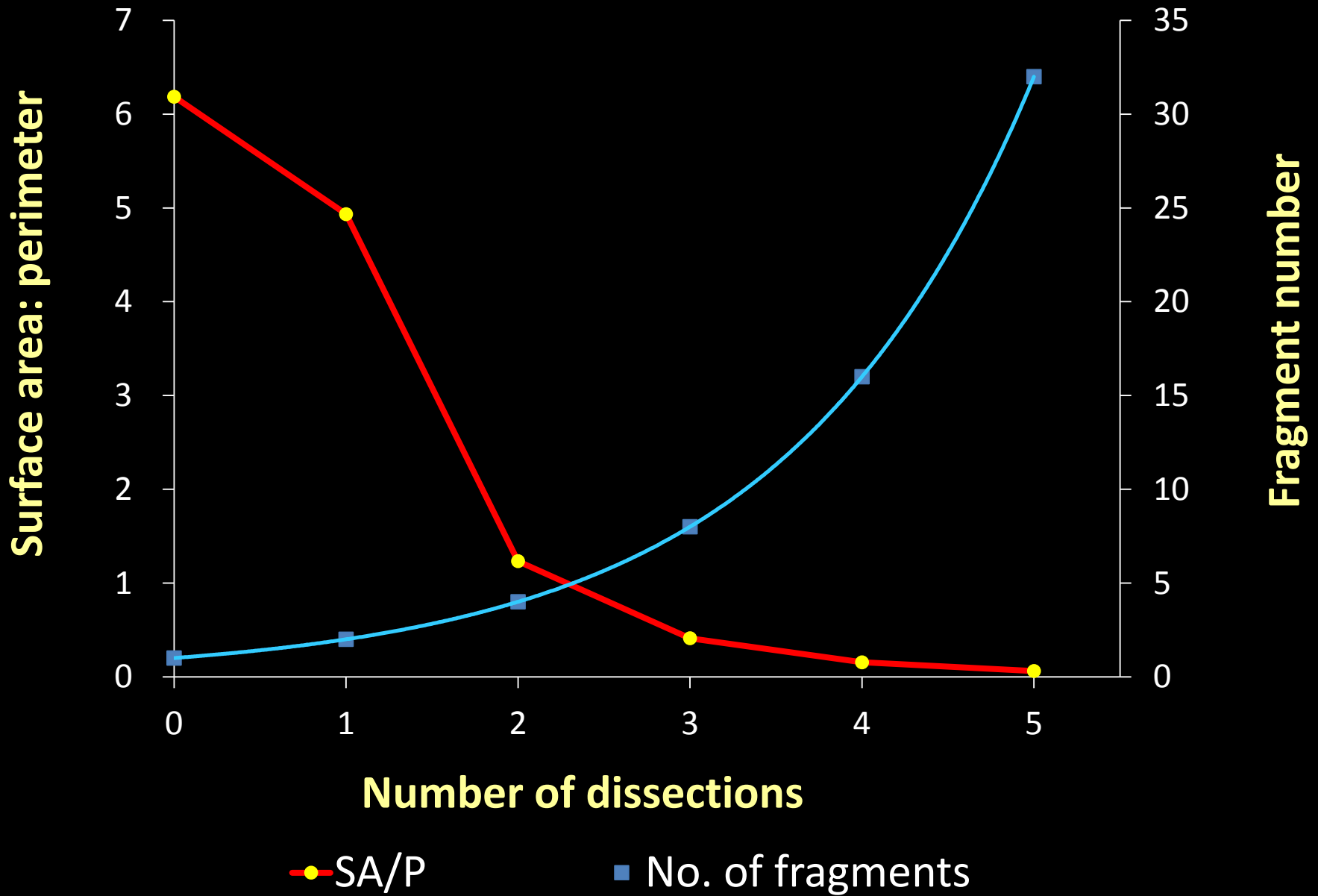
$= 4 \times (1\text{cm} + 1\text{cm} + 1\text{cm} + 1\text{cm}) = 16\text{cm}$

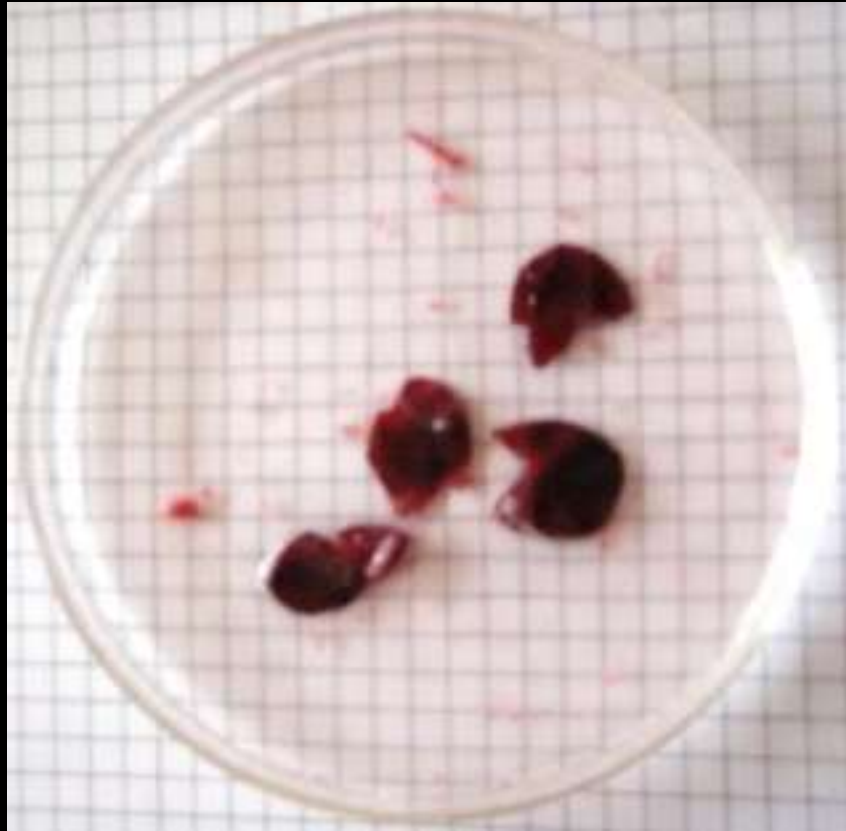
Cut again:

$= 16 \times (0.5\text{cm} + 0.5\text{cm} + 0.5\text{cm} + 0.5\text{cm}) = 32\text{cm}$

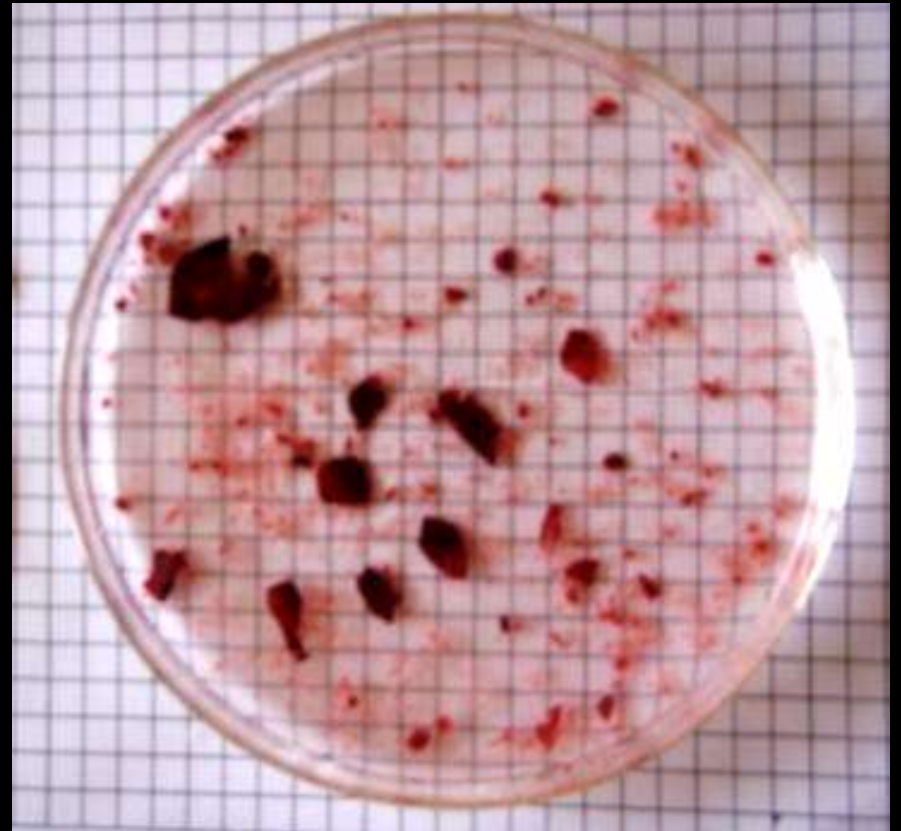


Fragmentation Effect



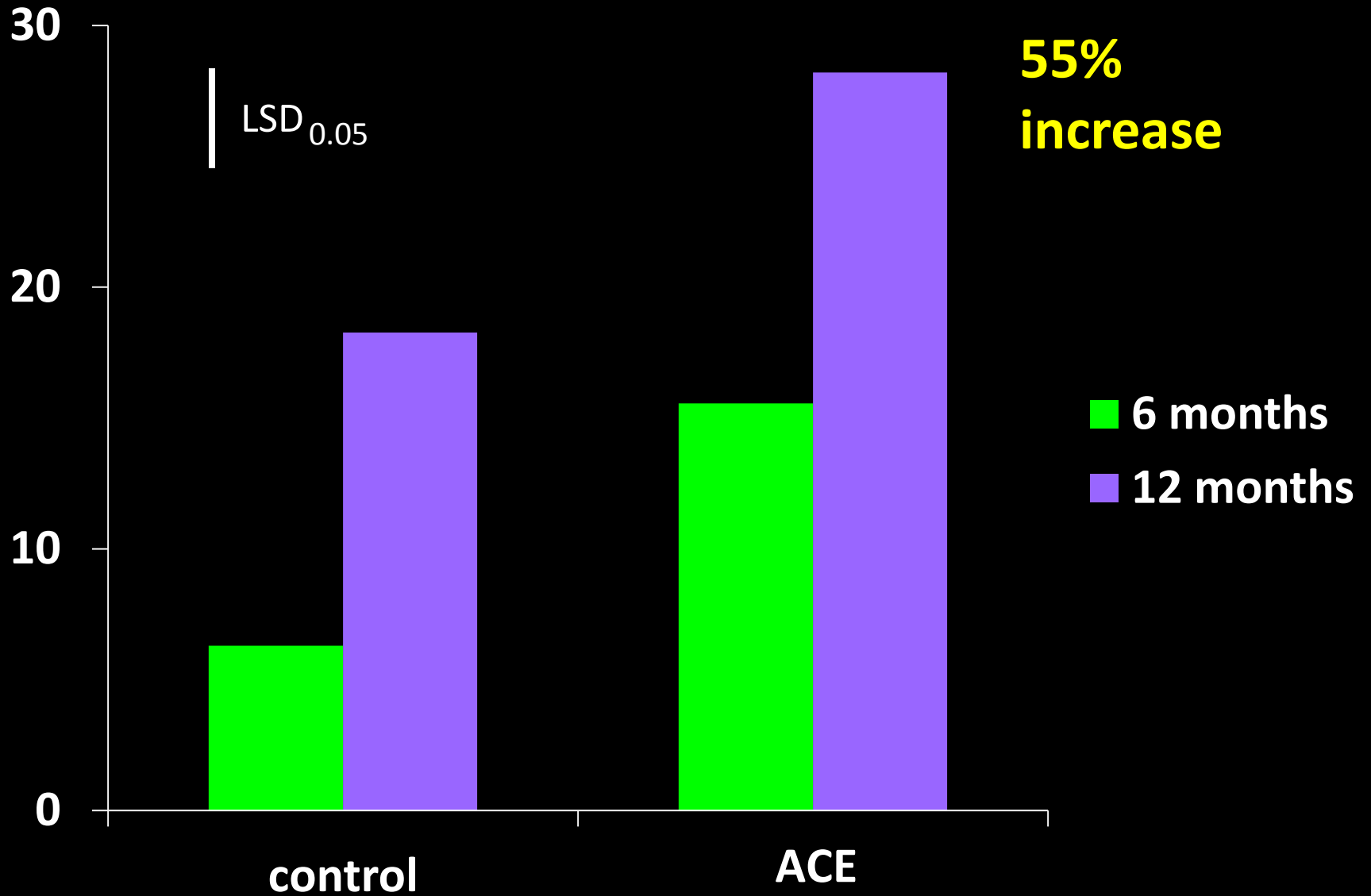


Control

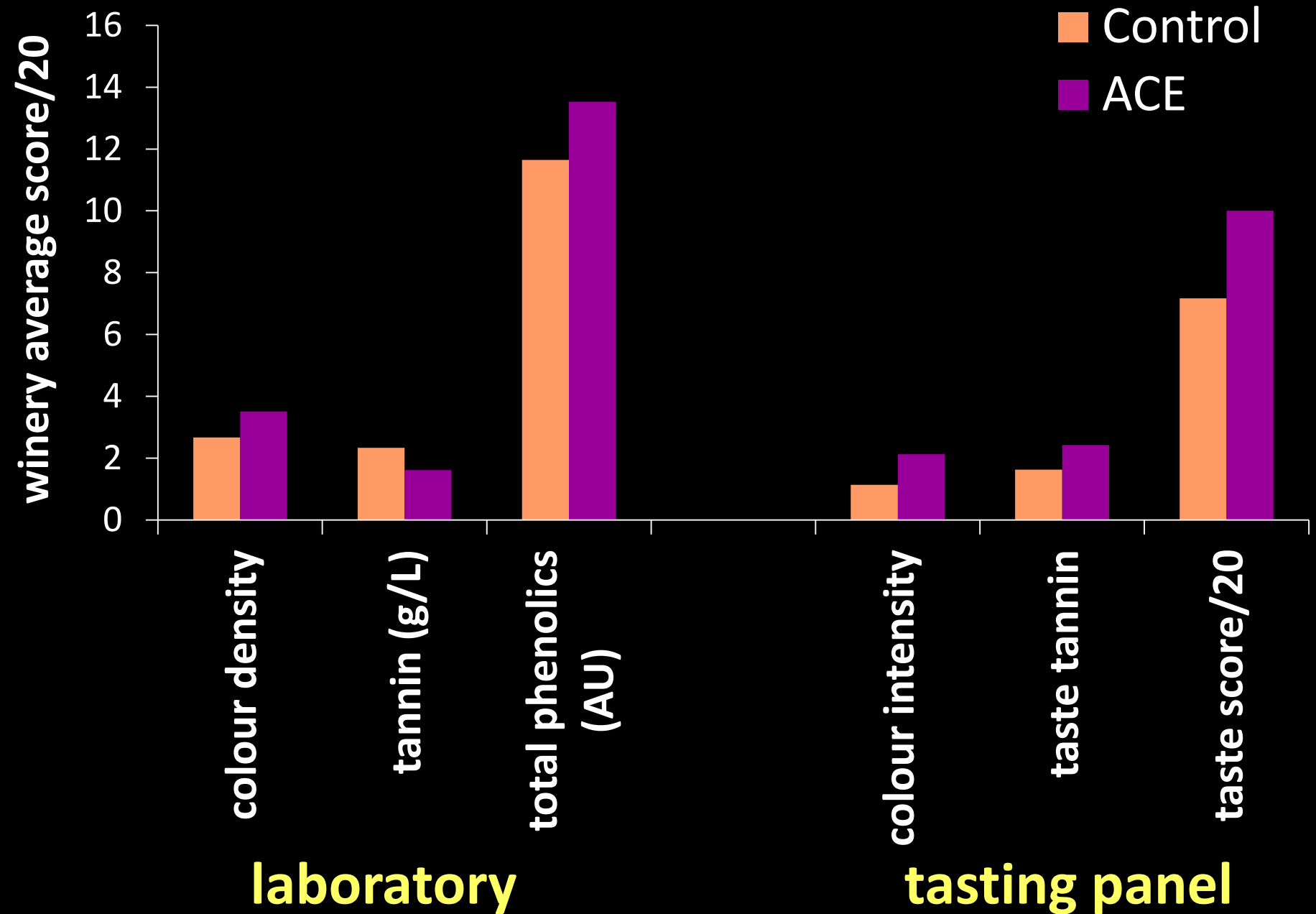


ACE

% Stable Pigment



Wine characters





UNIVERSITY *of*
TASMANIA

E: Angela.Sparrow@utas.edu.au

M: 0437 753 775