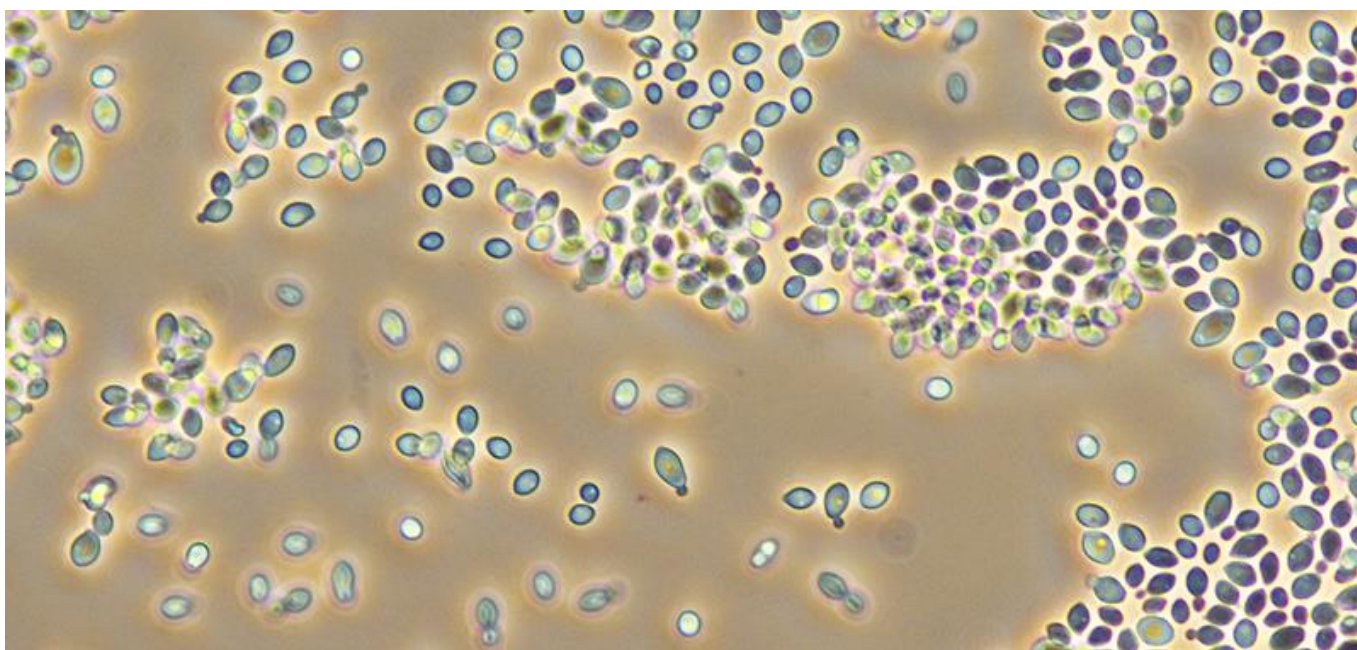


Winery *Brettanomyces* audits



Brettanomyces yeast cells seen under a microscope

What does a Brett audit involve?

AWRI Commercial Services offers a *Brettanomyces* (Brett) detection service for wineries. A standard Brett audit includes:

- Review of past/current issues
- Evaluation of efficacy of current sanitation methods and practices
- Identification of potential design and infrastructure risks
- Evaluation of current sulfur usage and QA measures
- Plating of inputs (rinse water, etc.) and wines (six samples) to check for viable *Brettanomyces* cells
- Swabbing and plating of up to 100 locations within the winery

After the audit is completed a brief report is provided with the overall findings and recommendations to mitigate any issues found.



AWRI



AWRI
COMMERCIAL SERVICES
SO MUCH MORE THAN A GREAT LAB

Fact Sheet

Why is it important?

There has been a significant increase in enquiries regarding Brett issues in wineries since late 2012. In most wineries there is a constant background presence of *Brettanomyces* yeast which can be difficult to eradicate. Avoiding wine spoilage requires ongoing sanitation procedures, appropriate wine storage conditions and regular monitoring. Brett spoilage typically occurs in red wine stored in barrel but can also occur in other areas of the winery. The development of Brett characters can be a very slow process, taking several months before becoming obvious in general tasting.

If live *Brettanomyces* strains are detected during an audit, action can be taken to reduce the risk of tainting products. The AWRI helpdesk is available to provide advice on managing Brett in the winery to Australian levy payers.

How much does a Brett audit cost?

The standard service is \$3,150 (ex GST) excluding travel and any additional sampling required.

All results remain Commercial in Confidence.

Contact

For further information, please contact:

Commercial Services

Phone 08 8313 6600 Fax 08 8313 6601 Email CommercialServices@awri.com.au

Website http://www.awri.com.au/commercial_services/wine-microbiology/

Address Wine Innovation Central Building, Corner of Hartley Grove & Paratoo Rd, Urrbrae (Adelaide), SA 5064